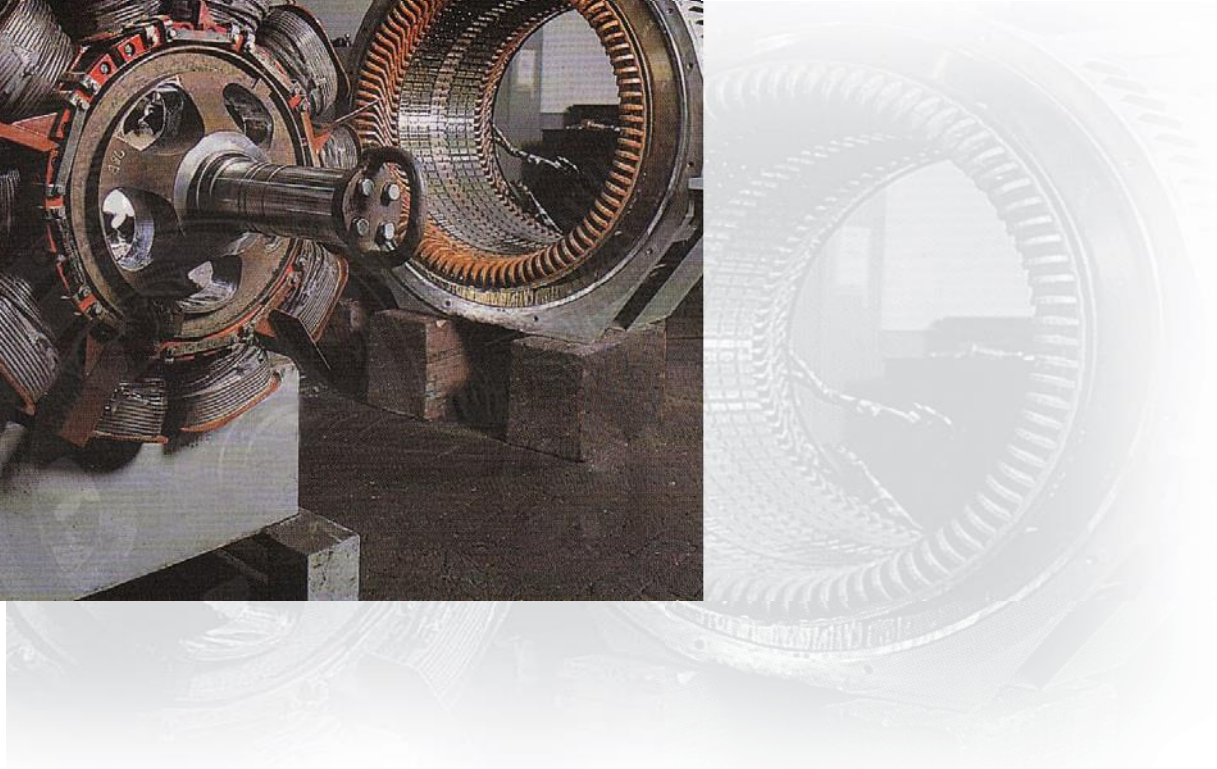
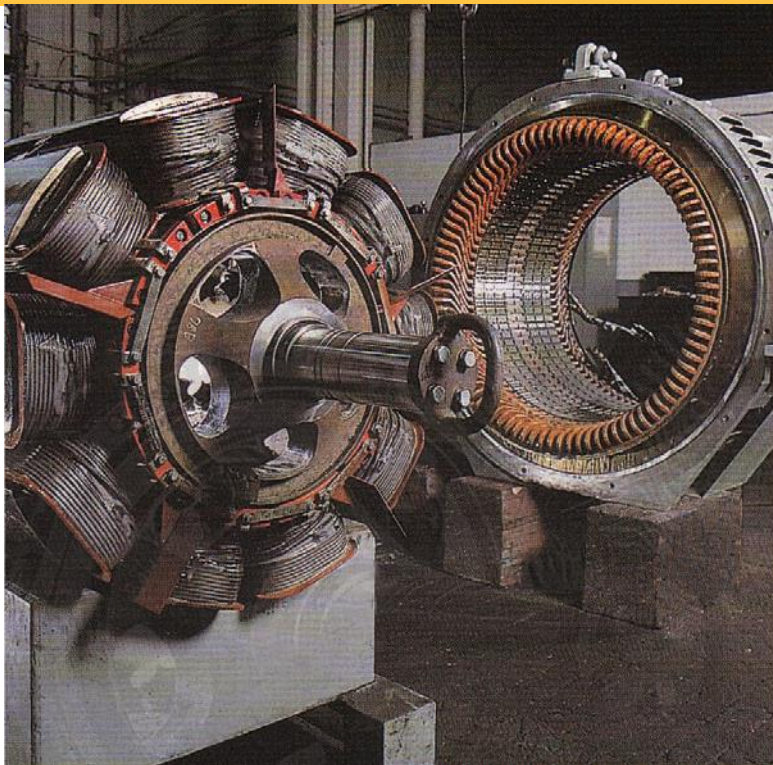


# SUPCO CANADA

## Locomotive Generators



## BEFORE



Primary Rotor  
Rewind



Companion Rotor  
Rewind



Primary Stator  
Rewind

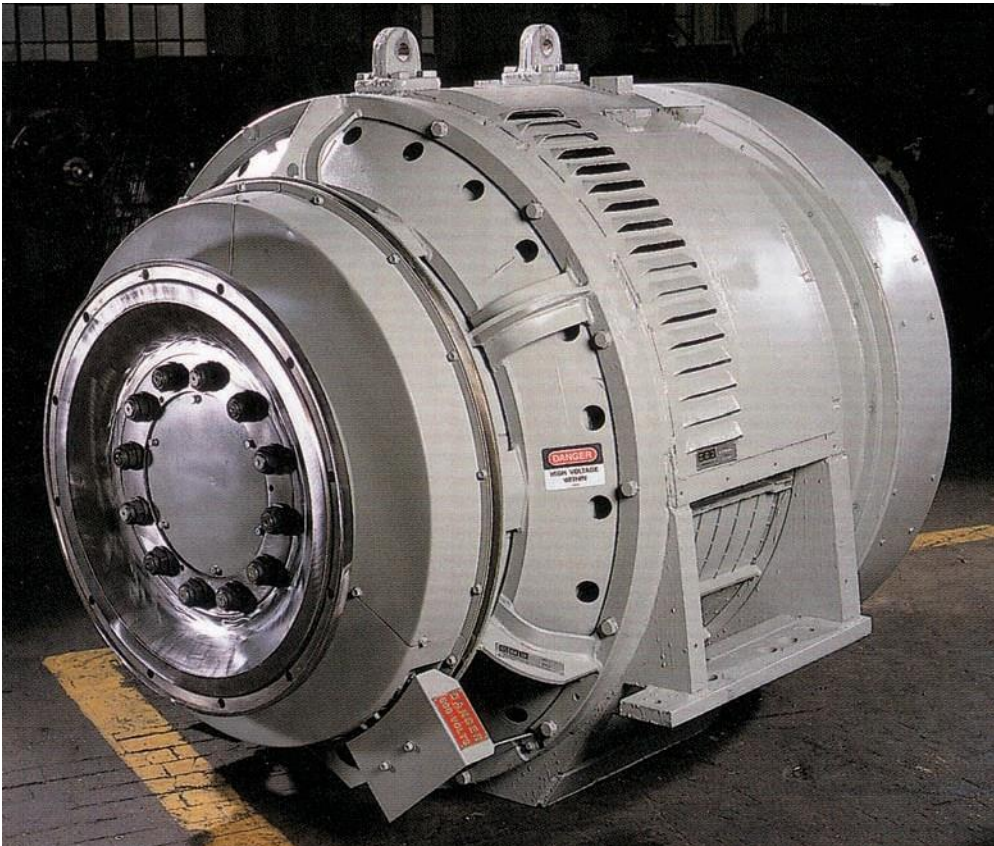



Companion  
Stator Rewind



Assembly

## AFTER

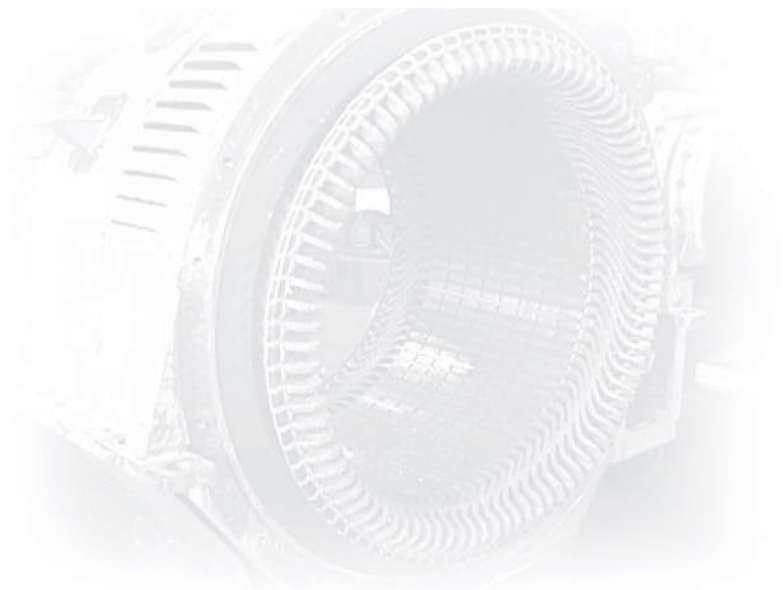




Supco Canada Railway Supply Group is capable to remanufacture all type of main alternators of EMD and GE locomotives according to maintenance instructions and corresponding to OEM Specifications. We have capability to repair the alternators on UTEX, Outright and Repair and return basis.

These services include but not limited to:

- Disassembly of components and washing
- Measurement and Re-Qualifying all Mechanical components
- Machine and repair the generators stand
- Replacing the shaft of the rotor assembly if required.
- Electrical Test of the Stator Assembly (Megger, Hi-Pot and Surge)
- Electric Test of Rotor Assembly (Megger, Hi-Pot and Surge)
- Rewinding the Stator Assembly if required
- Re-Coil the Rotor Assembly if required
- VPI the Stator Assembly and oven bake
- VPI the Rotor Assembly and oven bake
- Installation of the coupling disk
- Balancing the rotor assembly
- Recable the stator and rotor
- Replacing the Bearing Housings if necessary
- Replacing the bearing's components
- Re-machine and re-centre the Slip Rings or replace if necessary
- Refurbishment of the diode bank assembly, replacing the diodes and fuses
- Replacement all inspection covers and glass inspection windows if necessary



## Additional Capabilities

In addition to re-built and re-winding services, we are capable of supplying the relevant spare parts of different type of EMD and GE alternators including but not limited to:

- Stator Coils
- Rotor Coil Assemblies
- Rewind Insulation Kits
- Stator Laminations
- Shafts
- Bearing Housings
- Bearings
- Slip Ring Assemblies
- Diodes
- Resistors and Capacitors
- Flexible coupling disks
- Rectifier Banks and Housings
- Brushes and Brush Holders
- Terminal Boards



EMD® and GE® are registered trademarks for Electro-Motive Diesel Inc. and General Electric Company. Supco Canada Railway Supply is neither authorized EMD® and GE® distributor nor otherwise associated or affiliated with EMD® and GE®. The manufacturer models or part numbers used in our company's literature are for identification purpose only. There is no intent to represent these models or parts as made by OEM unless explicitly identified in product description. However Supco Canada Railway Supply represents that its replacement parts, components and sub-systems are compatible with such made by EMD® and GE®.

---

### Supco Canada Railway Supply Group

10557 Keele St., Maple L6A 0J5, CANADA, Tel; +1 905-303-7100, Fax; +1 905 303 0712, [www.supcocanada.com](http://www.supcocanada.com)